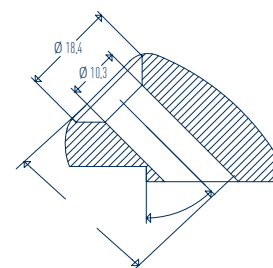
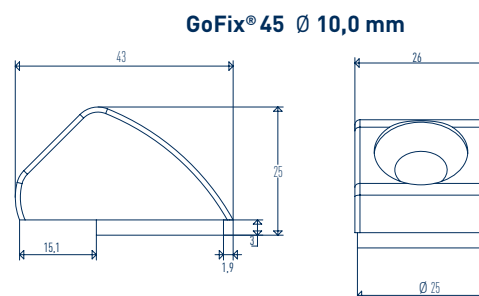
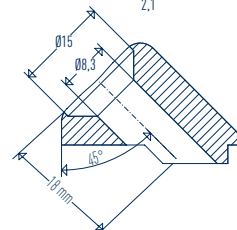
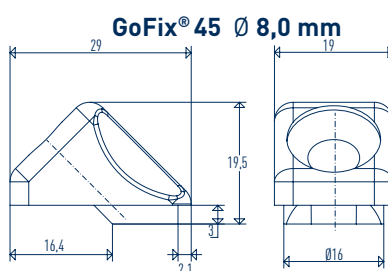


# GoFix® 45

## TECHNICAL DATA SHEET



SIHGA® montagepack		Dimension		Installation Part	
Art. No.	PU	Ø Drill [mm]	GoFix® 45 [mm]	Steel Thickness [mm]	Ø Steel Part Hole [mm]
31582	10	8,0	29 x 19 x 19,5	≤ 5	17
31592	10	10,0	43 x 26 x 25	6 - 10	26



### DETAILS

- fixed 45° inclination for optimal tensile force uptake
- ideal in combination with the SIHGA® GoFix® S+ 8.0 and 10.0 mm fully threaded screw or GoFix® SH
- no special production needed with inclined counterbore
- the most varied metal tabs can be used

**Tip:** For effortless screw-in of GoFix® S+, a tangential-impact screwdriver to spare your wrist joint.

