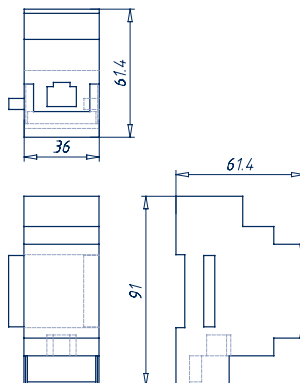
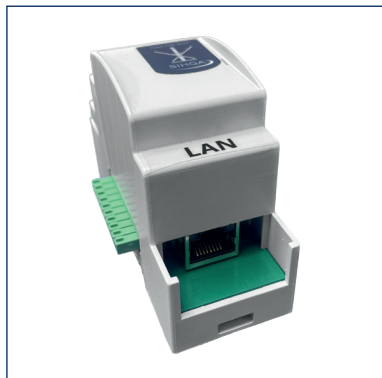


# Monitorix<sup>®</sup> LAN-module

## TECHNICAL DATA SHEET



### Mechanical properties

dimensions	36 x 90.5 x 62 mm (On top-hat rail 2DU*)
weight	67 g

\*DU = dividing unit (18 mm)

### Electrical properties

supply voltage	+3.3V $\pm$ 5 %
CE conformity	

### Connections

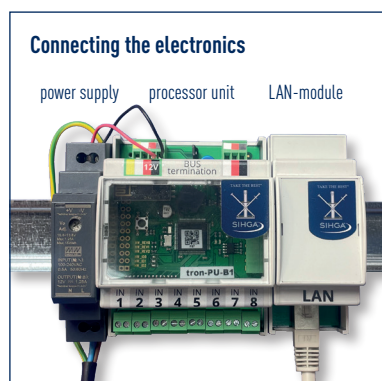
2x extension plugs	plug connection (female) for connector plug connection (male) to main processor
1x LAN	plug connection for network

### Ambient conditions

storage	10 ... 30 °C / 40 ... 60 % RH
operation	0 ... +70 °C / 10 ... 90 % RH (non-condensing)

### LAN

Ethernet	10/100 Mbit
protocols	HTTP(S), DHCP, IPv4, DNS



### NOTES ON THE APPLICABILITY AND VALIDITY OF THE DATA SHEET

All information is intended for professionals such as architects, building planners, tradesmen in the construction / roofing, carpentry and gardening and landscaping trades. They do not release you from your own responsibility. They have been compiled to the best of our knowledge, but do not constitute a guarantee. The currently applicable standards and recognised rules of technology apply to all planning and execution. We reserve the right to make changes due to improvements in application or production technology. The contents of the data sheet do not replace object-related, specialised structural planning. Interfaces to neighbouring trades are not highlighted separately, but must nevertheless be taken into account during planning and execution.

**IMPORTANT NOTE: Please ensure that the sensors and sensor tracks are installed when dry!**

TAKE THE BEST



Leitbetrieb Österreich Leitbetrieb Deutschland