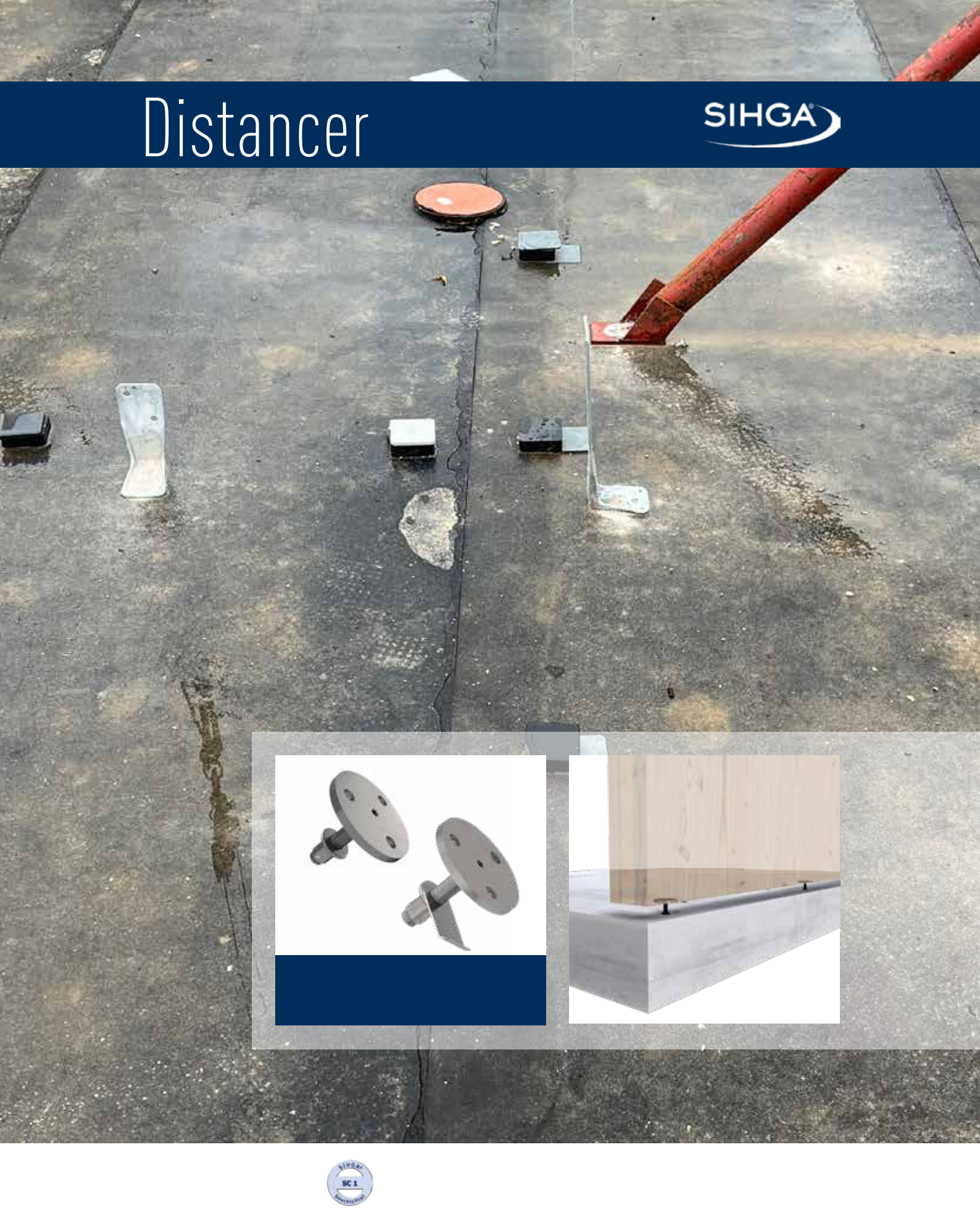


# Distancer



## SIHGA® Feature

Specially developed for the assembly of timber frame and cross-laminated timber constructions

Drill hole of 12 mm diameter and 50 mm depth required

TX 30 drive in disc

Stepless height adjustment from 8 - 40 mm via M10 thread

Fixing by screwing into the concrete slab

Compatible with Orakelix thanks to perforations in the disc and the option of combining with a laser

No need to attach plates

## YOUR benefit

Perfectly suited for quick and precise installation of the first component on the concrete floor slab, no tedious placement of levelling plates

Simply drill and tap in the threaded sleeve with a hammer

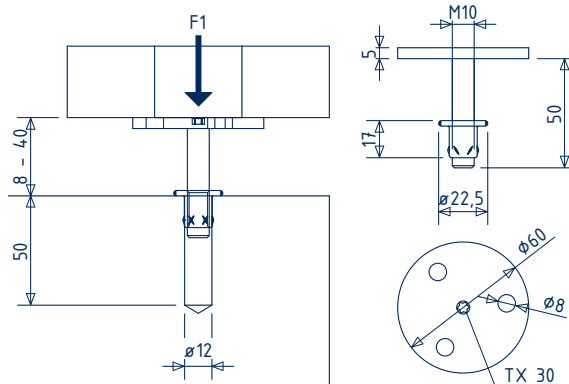
The distancer can be screwed in to the desired height in a flash using a cordless screwdriver

Precise and flexible adjustment, a real game changer

Stability guaranteed, no unintentional slipping or shifting

Even more efficient in combination with Orakelix and a laser, for exact levelling, maximum precision and ergonomic working in a standing position

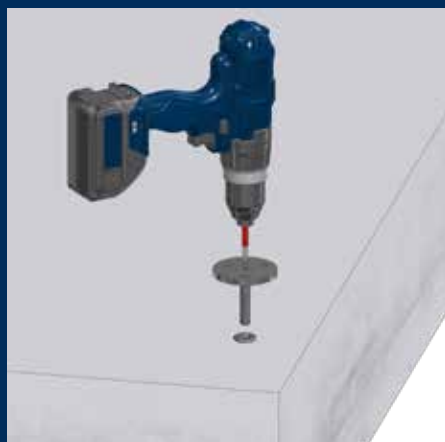
No tedious handling



SIHGA®		Dimension	Recommended values*		
montagepack / parcel		Distancer	Pressure F1 max.	Tension	Cross
Art. No.	PU	Type	[kN]		
50056	25	M10x50	10	-	-
50072	25	DistaStop	-	-	-

\* recommended values refer to the load-bearing capacity of the steel parts. The press-fit of the distancer in the overlying timber component must be dimensioned in accordance with EC 5.

SIHGA®		Accessory
montagepack		Orakelix Adaptor
Art. No.	PU	Type
55556	1	Distancer



Adaptor for Orakelix



### SIHGA® TIP:

The permanently acting compressive forces, e.g. of a wall mounted on it, must be dissipated using suitable methods, such as a swelling mortar strip.

