

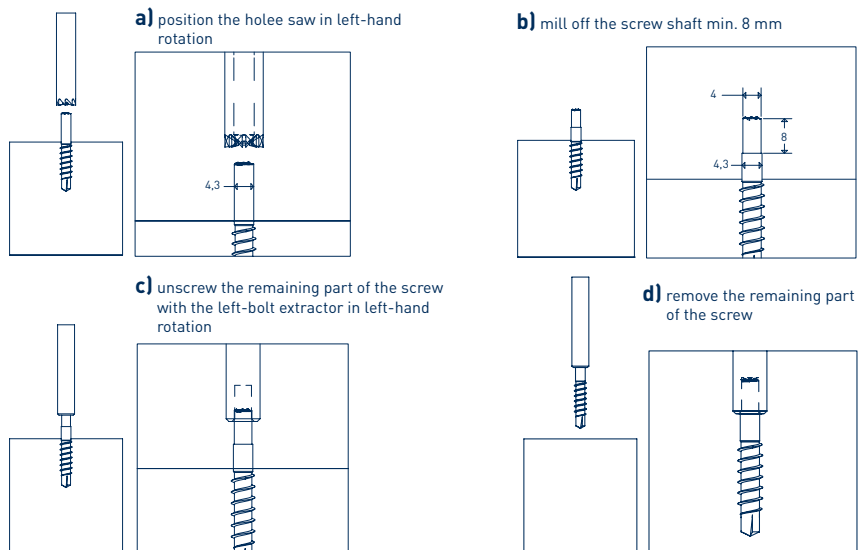
Rest-X[®]

TECHNICAL DATA SHEET



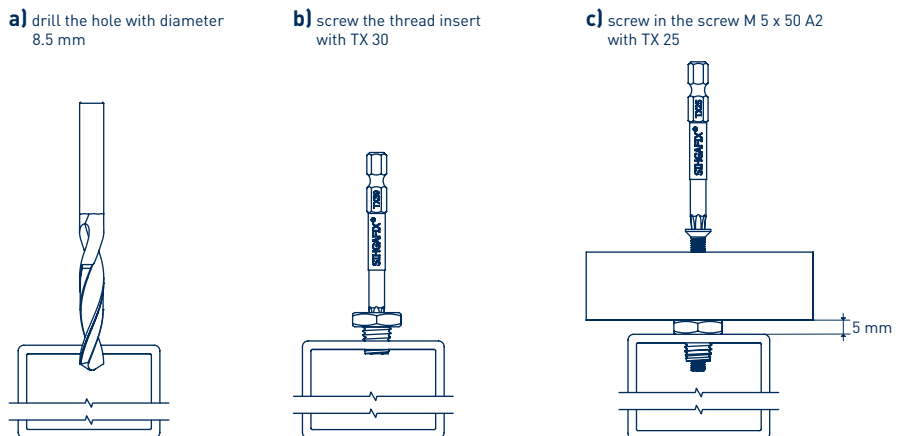
montagepack		Hole Saw	Screw Extractor	HSS Drill	SIHGAFIX [®]
Art. No.	PU	Ø [mm]	Ø [mm]	Ø [mm]	
34802	1	8,5 / 4,0	7,5 / M 4,5 left	8,5	TX 25 and 30

Procedur in Wood- and Aluminium-Substructure



montagepack		Thread insert	Drill
Art. No.	PU	Ø [mm]	Ø x L [mm]
34812	20	M 5	5 x 50

in the case of repairing aluminium sub-structures, a thread insert plus a replacement screw are required for each faulty screw (20 are included in one montagepack)



Rest-X[®]

TECHNICAL DATA SHEET



1. Position the hole saw in left-hand rotation and mill off the remaining part of the screw



2. Unscrew the remaining part of the screw with the left-bolt extractor in left-hand rotation



3. Screw in the new screw

DETAILS

with Rest-X[®], it is possible to repair individual broken screws WITHOUT having to extensively dismantle the terrace.

the new screw can be screwed STRAIGHT into the old drill hole.

Rest-X[®] is suitable for stainless steel screws of Ø 5 mm and Ø 5.5 mm (by all manufacturers).