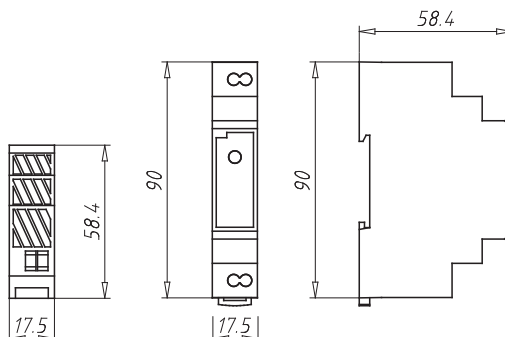
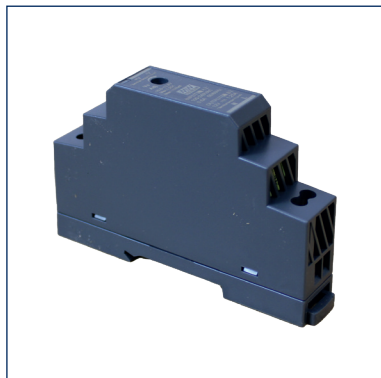


# Monitorix<sup>®</sup> power supply

## TECHNICAL DATA SHEET



### Mechanical properties

dimensions	90 x 58.4 x 17.5 mm
model	HDR-15-12

### Electrical properties

MTBF	3724.3K hrs min. Telcordia SR-332 (Bellcore) ; 1166.1K hrs min. MIL-HDBK-217F [25 °C]
------	---

### Electrical properties – Output

DC voltage	12V
rated current	1.25A
current range	0 ~ 1.25A
rated power	15W
ripple and noise	120mVp-p
voltage adj. range	10.8 ~ 13.8V
voltage tolerance	±1.0%
line regulation	±1.0%
load regulation	±1.0%
setup, rise time	2000ms, 80ms/230VAC 2000ms, 80ms/115VAC at full load
hold-up time	30ms/230VAC, 12ms/115VAC at full load

### Electrical properties – Input

voltage range	85 ~ 264 VAC (277 VAC operational) 120 ~ 370 VDC (390 VDC operational)
frequency range	47 ~ 63 Hz
efficiency [Typ.]	85 %
AC current [Typ.]	0.5A/115VAC, 0.25A/230VAC
inrush current	cold start 25A/115VAC, 45A/230VAC

### Network connection detail



TAKE THE BEST



Leitbetrieb Leitbetrieb  
Österreich Deutschland

## Protection

overload	110 ~ 145% rated output power Hiccup mode when output voltage <50%, recovers automatically after fault condition is removed Constant current limitation within 50% to 100% of the rated output voltage, recovers automatically after fault condition is removed
over voltage	14.2 ~ 16.2 V Protection type : Shut off o/p voltage, clamping by zener diode

## Environmental conditions

working temperature	-30 ~ +70°C (Refer to „Derating Curve“)
working humidity	20 ~ 90% RH non-condensing
Storage temperature, humidity	-40 ~ +85°C, 10 ~ 95% RH non-condensing
temperature coefficient	±0.03%/°C (0 ~ 50°C) RH non-condensing
vibration	10 ~ 500Hz, 2G 10min./1cycle, period for 60min. each along X, Y, Z axes; Mounting: Compliance to IEC60068-2-6
operating altitude	2000 meters
overvoltage category	III; According to EN61558, EN50178, EN60664-1, EN62477-1; altitude up to 2000 meters

## Safety

safety standards	UL62368-1, UL508, TUV BS EN/EN61558-2-16, BS EN/EN61558-1, IEC62368-1, EAC TP TC 004, BSMI CNS15598-1 approved; Design refer to TUV BS EN/EN62368-1
withstand voltage	I/P-O/P: 4 kV AC
insulation resistance	I/P-O/P: 100M Ohms / 500VDC / 25°C / 70% RH

## NOTES ON THE APPLICABILITY AND VALIDITY OF THE DATA SHEET

All information is intended for professionals such as architects, building planners, tradesmen in the construction / roofing, carpentry and gardening and landscaping trades. They do not release you from your own responsibility. They have been compiled to the best of our knowledge, but do not constitute a guarantee. The currently applicable standards and recognised rules of technology apply to all planning and execution. We reserve the right to make changes due to improvements in application or production technology. The contents of the data sheet do not replace object-related, specialised structural planning. Interfaces to neighbouring trades are not highlighted separately, but must nevertheless be taken into account during planning and execution.

**IMPORTANT NOTE: Please ensure that the sensors and sensor tracks are installed when dry!**

TAKE THE BEST



Leitbetrieb Leitbetrieb  
Österreich Deutschland